

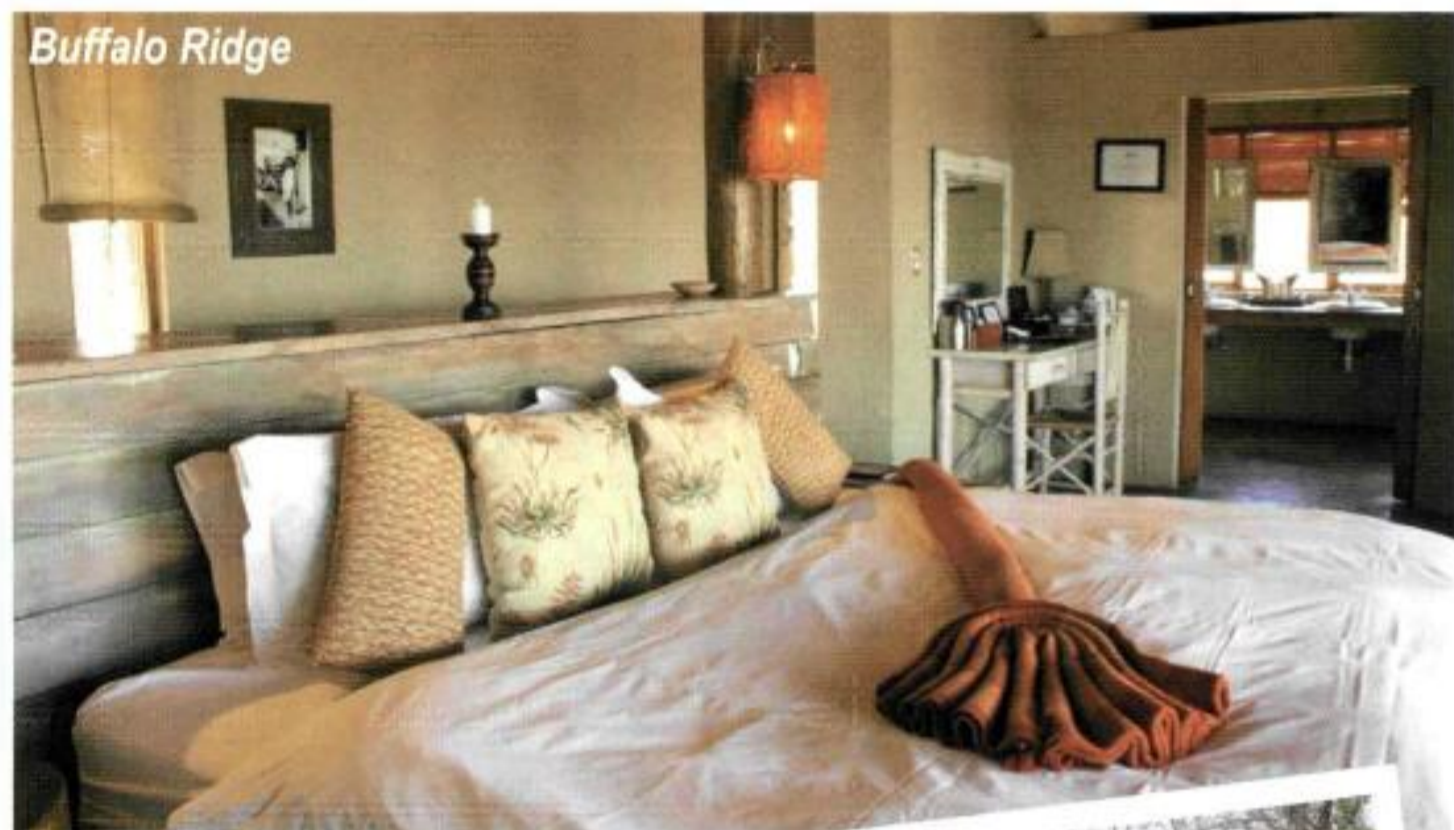
# Madikwe Game Reserve

## ANTI-RHINO POACHING INITIATIVE

By Athol Franz

On Saturday 13 November, the Madikwe Collection hosted a musical soiree under the stars, which raised R50 000 for the North West Parks & Tourism Board (NWP&TB) Counter Poaching Unit (CPU). After losing a male rhino to poachers the week before, the Madikwe Collection has joined the national struggle against the terrible scourge of poaching in South Africa.

Rhino poaching in the country has hit an all time high with more than 185 rhinos being killed this year alone.



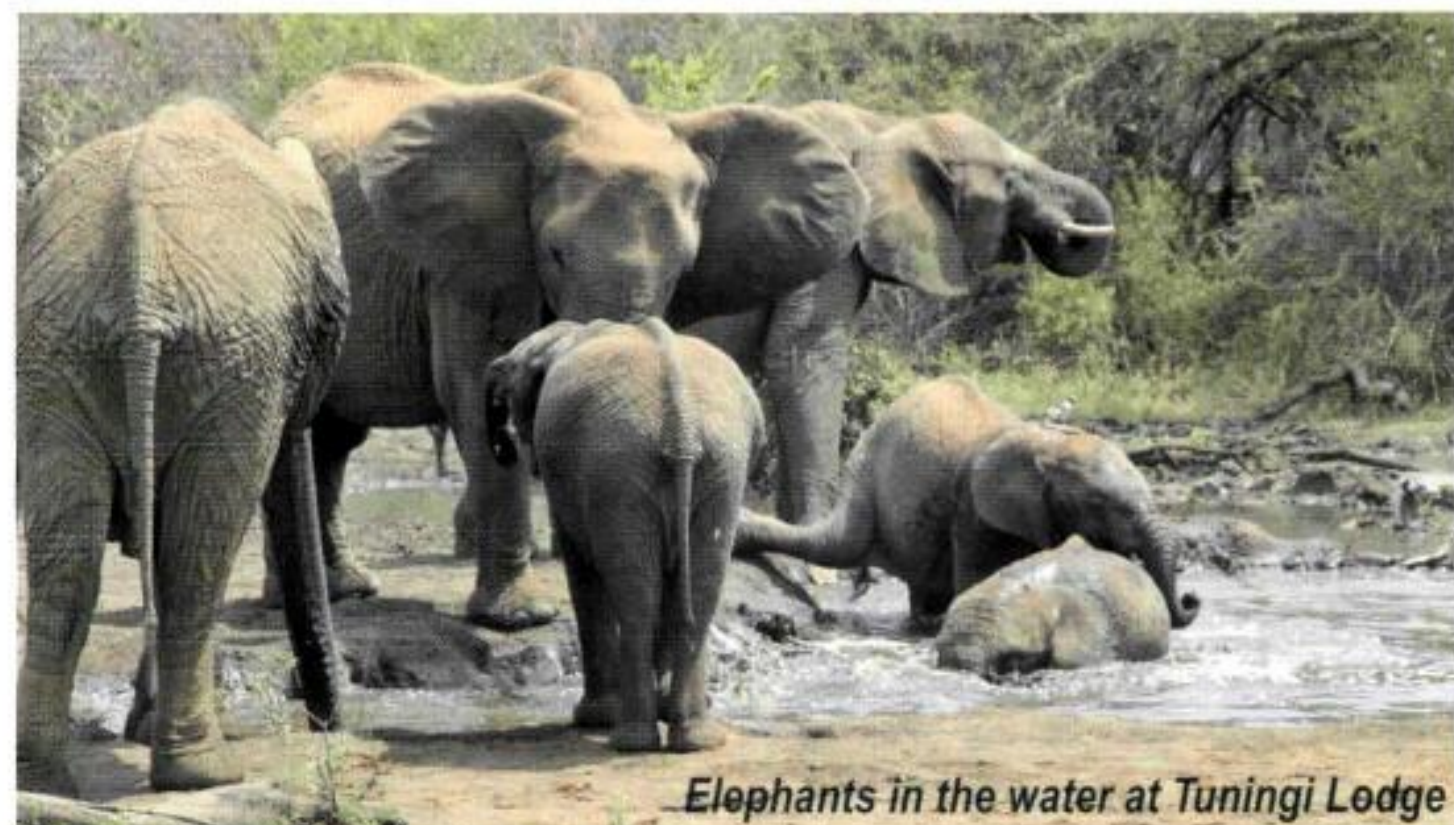
Buffalo Ridge



Concert at Madikwe



Tuningi Lodge



Elephants in the water at Tuningi Lodge

Madikwe Game Reserve is about 70 000 hectares of bush land just north of the little town of Groot Marico that stretches all the way up to the Botswana border. It is about a three and a half hour drive from Johannesburg. Madikwe is a relatively new reserve, only opening its gates in August 1991, but not only is it one of South Africa's largest and most popular game reserves, it is also one of the only game reserves in the world proclaimed a reserve purely on the grounds of its being the most appropriate and sustainable land use, for this formerly depressed farming area.

In order to be part of this historic evening in the bush, Cheryl and I travelled to Madikwe on Friday 12 November and stayed at the Tuningi Safari Lodge for the night. We then relocated to Buffalo Ridge on Saturday morning where we stayed after the musical soiree in the bush. These two lodges are part of the Madikwe Collection's stable of exclusive bush lodges that have been awarded the Fair Trade in Tourism certification. Both lodges are 100% community-owned and have achieved this independent global mark of approval that falls under Fair Trade in Tourism South Africa which rewards fair and responsible business practice by South African tourism establishments. The stringent qualifying criteria include fair wages and working conditions; fair operations, purchasing and distribution of benefits; ethical business practice and respect for human rights, culture and the environment.

### EVIDENCE OF A GIVE-BACK ETHOS

"We are thrilled that Tuningi Safari Lodge has been recognised by Fair Trade in Tourism, bringing to three the number of Madikwe Collection lodges that carry this important mark of approval. Receiving Fair Trade status is indeed an honour of the highest order and reflects the ethos of fairness and the 'give-back' philosophy that underpins not only our community-owned lodges, but all the establishments in the Madikwe Collection," said Kate Naughton, marketing director for The Madikwe Collection. Co-founders of the Madikwe Collection, Carl Trieloff and William Stephens, are recognised as ecotourism visionaries for ensuring that the wealth created through South Africa's international ecotourism industry benefits the people who live in the areas surrounding the Madikwe Game Reserve.

"The Madikwe Collection is fully committed to tackling the poaching issue and we are tapping into all of our resources to raise awareness and additional funding," said Peter Channing of the Madikwe Collection. The highly successful musical soiree saw guests enjoy a two-part performance by six of South Africa's leading classical musicians: Malane Hofmeyr playing the flute. Peta Ann Holdcroft on the cello. Ivo Ivanof, Irene Tsoniff and Marjan Vonkas were the violinists and Rosemarie Kane played the harp. Open air game-viewing vehicles



delivered guests from the private lodges to the concert site in the bush, where they were given welcoming cocktails and a short presentation on the poaching situation in South Africa.

"The existing Counter Poaching Unit relies entirely on the volunteer services of 20 members who work closely with the recently-established Anti Poaching Unit, a permanent force in the NWP&TB," explains Channing. "The funds raised from the musical soiree will go towards purchasing much-needed equipment such as night vision thermal imaging systems, binoculars for each member and basic equipment such as radios, webbing, sleeping bags and ground sheets."

The Madikwe Collection has also recently created a Rhino Fund, which has been specially set up for receiving donations towards the Madikwe Collection's Counter Poaching Unit on behalf of Madikwe Game Reserve's rhinos. Guests staying at all of Madikwe's lodges will be given the opportunity to learn more about the poaching issue and make a donation towards the Rhino Fund. "The horrific poaching that recently took place within the Madikwe Reserve was almost certainly carried out by professional poachers," adds Channing. "We clearly need to better equip our own anti-poaching units and provide them with everything to combat these terrible criminals." According to Channing, individuals and organisations are more than willing to join the fight. "I have been caught off guard by the generosity of people," says Channing. "Both individuals and corporate entities are very eager to get involved and show their support, which is tremendously encouraging."

Madikwe Game Reserve on the border of South Africa and Botswana is accessible by road. As mentioned above it is a three and a half hour journey from Johannesburg. An executive daily air shuttle service operates from the Johannesburg International Airport to Madikwe Game Reserve. Departing from the Federal Air's executive lounge at Johannesburg International Airport, the service is operated with aircraft from the latest model Cessna Grand Caravans as well as twin-engine piston aircrafts. In addition, one may fly to Madikwe in one's own plane.

There are two excellent runways on the Madikwe reserve: Western airstrip is 1.8 Kms. long with a gravel surface. GPS co-ordinates: 24°44'00' S 26°24'27' E. Eastern airstrip is presently being upgraded to a paved runway and is about ten miles to the east of the western airstrip. 🛩

For further information on Madikwe Collection please visit:  
[www.madikwecollection.com](http://www.madikwecollection.com) • Tel: 011 805 9995  
e-mail [reservations@madikwecollection.com](mailto:reservations@madikwecollection.com)

*Endangered White Rhino*

